

Erect terrestrial herb. Rhizome creeping, rooting from nodes, 10.0 × 0.1–0.2 cm. Stem rooting from lower nodes, terete, 3–7-leaved, 8.3–12.7 × 0.2–0.4 cm; internodes 0.9–2.6 cm long. Leaves ovate-elliptic, subacuminate, with indistinct to distinct dark green marking evident in dry material, 5.5–9.0 × 2.6–3.6 cm; petiole and sheath 2.1–3.2 cm long. Inflorescence pubescent, 20.1–30.3 cm long; peduncle 11.5–20.3 cm long; sheathing bracts 4–7, the lowest one subfoliaceous, upper 3–5 ovate-lanceolate, acute, 0.85–3.40 cm long; rachis subaxillary-flowered, 3.5–8.0 cm long; floral bracts ovate-lanceolate, acute, 0.7–1.0 × 0.2–0.3 cm. Pedicellate ovary clavate, laxly pubescent, 6–7 mm long. Flowers externally pubescent, white. Dorsal sepal oblong-elliptic, subacute, 5.0–5.3 × 1.7–2.0 mm. Lateral sepals obliquely oblong-lanceolate, obtusish, 5.8–6.0 × 1.45–1.70 mm. Petals obliquely oblong, obtusish, 5.0–5.9 × 1.0–1.5 mm. Labellum spurred, trilobed, joined to column for 0.8–1.6 mm; spur oblongoid to oblongoid-subfusiform, obtuse, 2.05–2.50 mm long; hypochile ovate-lanceolate, 3.4–4.0 × 2.0–2.5 mm, 0.8–1.0 mm wide apically; epichile transversely ligulate-reniform, minutely papillose-puberulent, 0.9–1.0 × 2.2–3.0 mm, lobules obtuse, 0.5–0.8 mm wide. Column 2.0–2.6 mm long.

Distribution: Panama.

Habitat: cloud forest (holotype), 1200–1260 m.

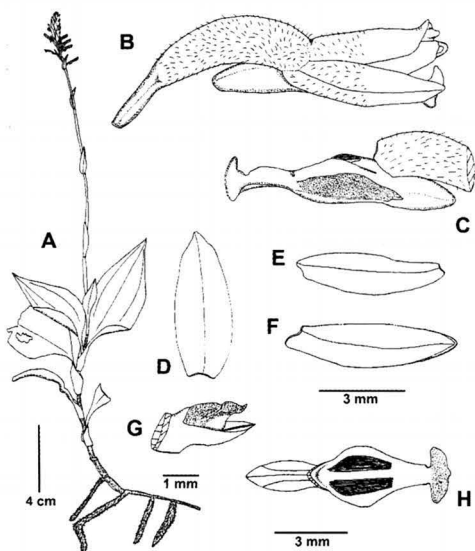
Specimens examined: PANAMA. Chiriqui: along road between Gualaca and the Fortuna Dam site, 13.2 km NW of Los Planes de Hornito, 1260 m, 9 April 1980, *T. Antonio 4153* (MO); same data, *T.B. Croat 49960* (MO). Chiriqui/Bocas del Toro: continental divide, above La Fortuna Dam, 1200 m, June 1986, *Luthor, Besse, Halton & Kress 1123* (SEL, x 2). Bocas del Toro: near Fortuna Dam, along trail on continental divide, 1250 m, 26 June 1987, *G. McPherson 11084* (MO); Fortuna Dam area, continental divide, ridge trail to unnamed peak to E of Oleoducto road, 1200 m, 1 August 1984, *H. W. Churchill 5867* (MO).

This species is closely related to its Mesoamerican congener *M. vesicifer* (Rchb.f.) Ormerod from which it may be distinguished by the finer green markings on the leaves and flowers which have narrower petals (1.0–1.5 vs. 2 mm) and narrower oblongoid (not ellipsoid) spur.

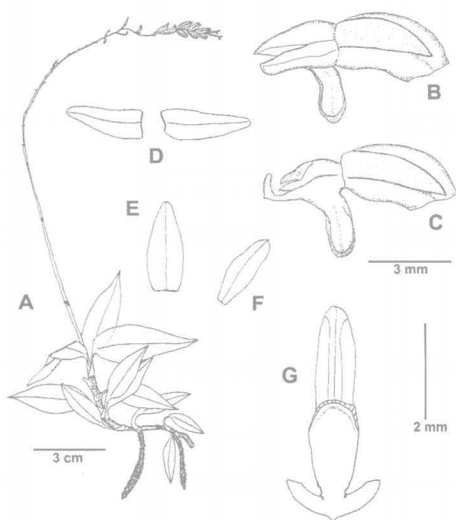
Microchilus whitefoordiae Ormerod, *sp. nov.*
 TYPE: PANAMA. Chiriqui: Fortune Lake to Chiriqui Grande road, trail W of continental divide, 1200 m, 22 March 1985, *Hampshire & C. Whitefoord 867* (Holotype: BM). Fig. 33.

Affinis M. vesicifer (Rchb.f.) Ormerod *sed petalis floribus angustioribus* (1.0–1.5 vs. 2 mm) *et calcar oblongoideis* (non ellipsoideis) *differt.*

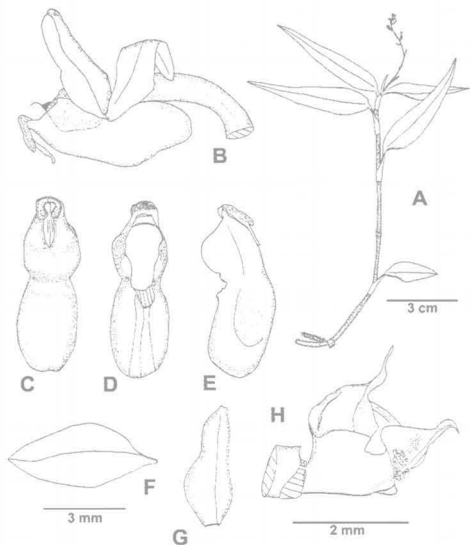
33



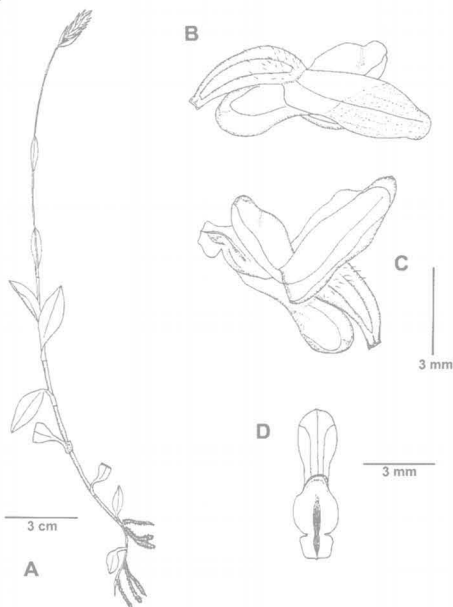
34



35



36



FIGURES 33–36. *Microchilus* and *Platythelys* species. **33.** *M. whitefoordiae*. A, plant; B, flower; C, flower minus tepals; D, dorsal sepal; E, petal; F, lateral sepal; G, column; H, labellum and spur (drawn from holotype). **34.** *M. xeranthum*. A, plant; B, flower; C, flower minus tepals; D, lateral sepals; E, dorsal sepal; F, petal; G, labellum and spur (drawn from holotype). **35.** *P. alajuelae*. A, plant; B, flower; C, labellum and spur from below; D, above; E, one side; F, lateral sepal; G, petal; H, column (drawn from holotype). **36.** *P. pachysepala*. A, plant; B, flower; C, flower with lateral sepals forced back; D, labellum and spur (drawn from holotype).